



METALMASTER®

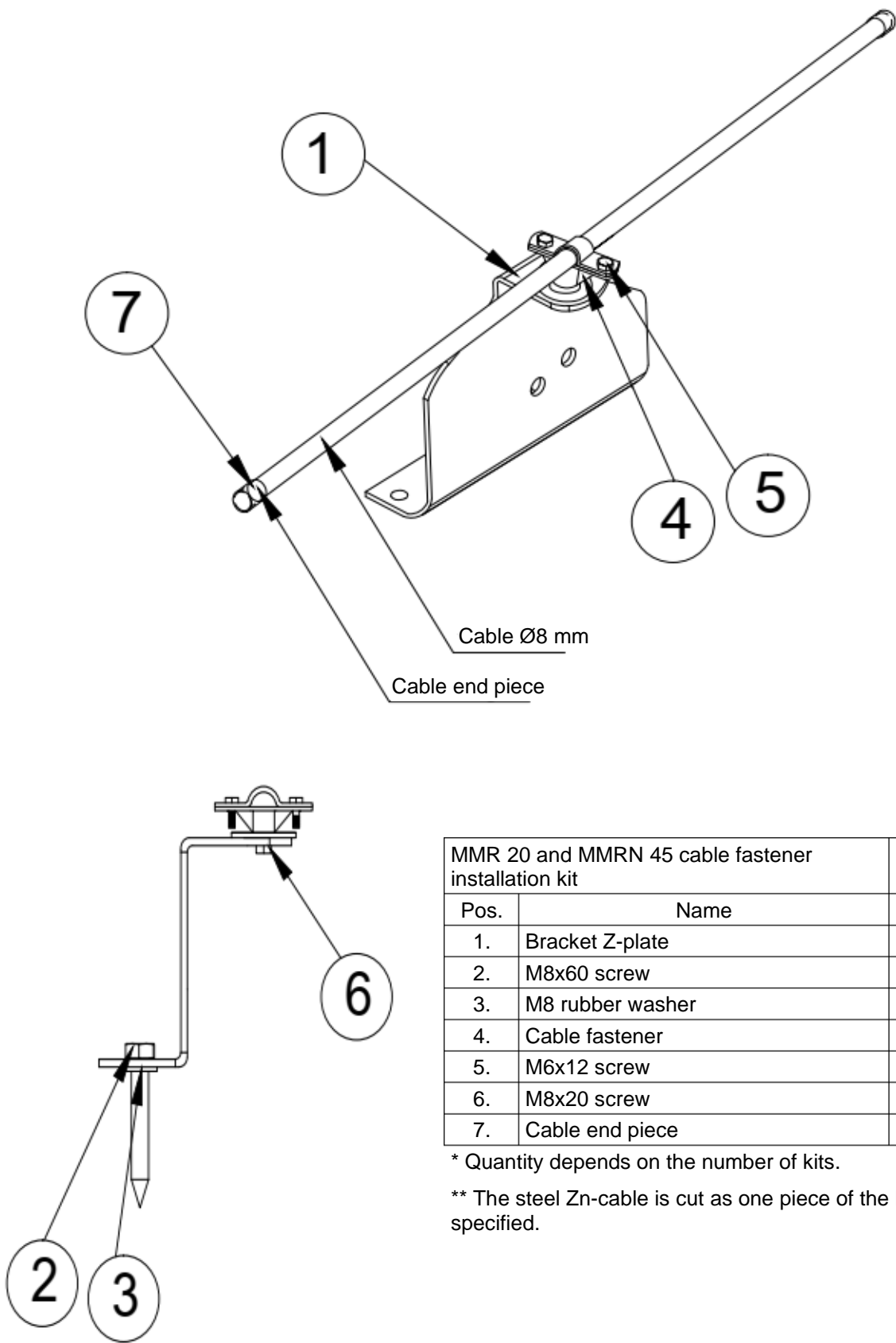
Safety cable bracket

MMR 20

MMRN 45

INSTALLATION GUIDE

Safety cable bracket — MMR 20 and MMRN 45



Safety

- No more than one person, weighing up to 120 kg, may be near the safety cable at any single time!
 - Use certified safety ties!
 - Do not use the safety cable if it has visible damage or defects!
-

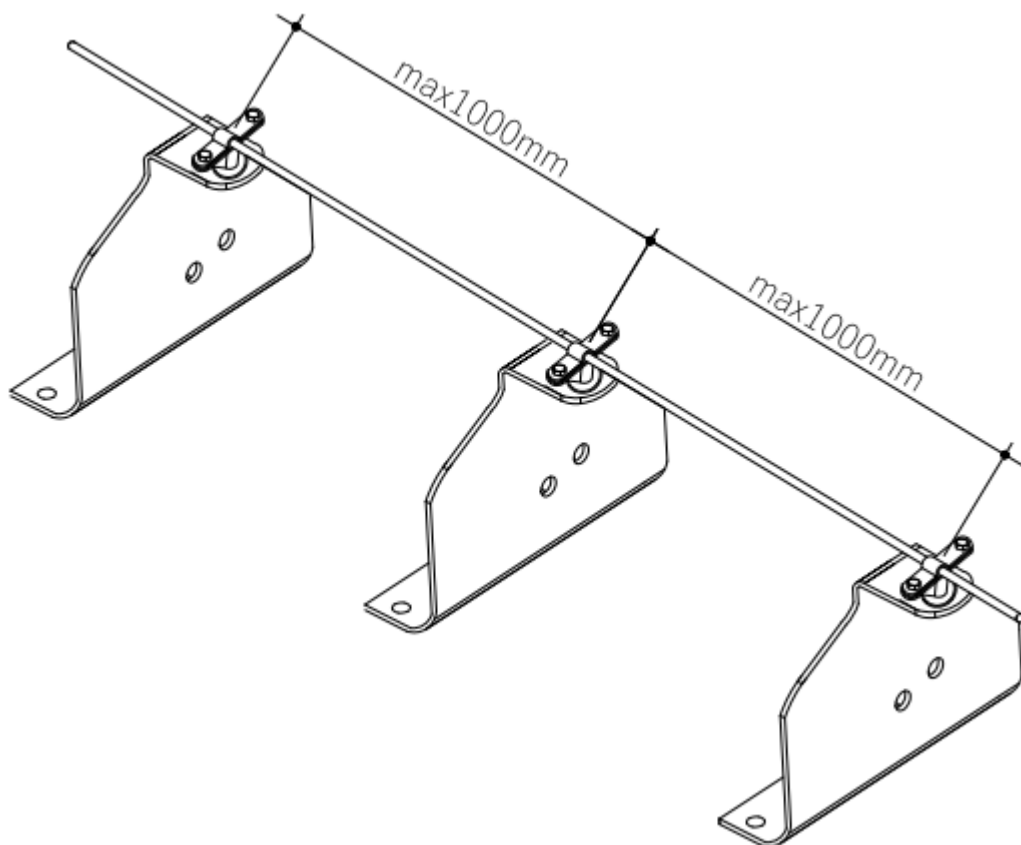


Figure 1.

Installing the safety cable bracket

- Plan the location for installation.
- Make sure that the roof structure is stable.
- The safety cable Z-bracket plate must be installed on top of the roof battens.
- Check to confirm that the roofing is installed according to the roof installation instructions.
- Install the PR-bracket plate by placing it onto the edge of the roof seam protrusion such that the PR-bracket plate is in a vertical position (Figure 2).
- Screw the PR-bracket plate to the roof using 2 M8x60 mm screws and 2 M8 rubber washers (Figure 2).
- Tighten the screws such that the Z-bracket plate holds firmly on the roof material (Figure 2).
- Install the safety cable fasteners on top of the Z-bracket plate and screw them together using the M8x20 screw (Figure 2).
- Place the cable into the cable fastener, securing it with two M6x12 screws and an M6 nut (Figure 3).
- Attach a safety cable end piece at both ends of the cable (Figure 3).
- The maximum interval between Z-bracket plates is 1000 mm (Figure 1).

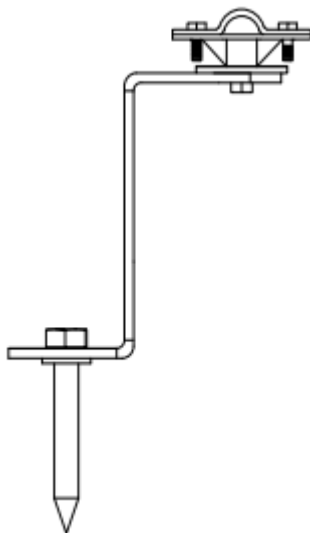


Figure 2.

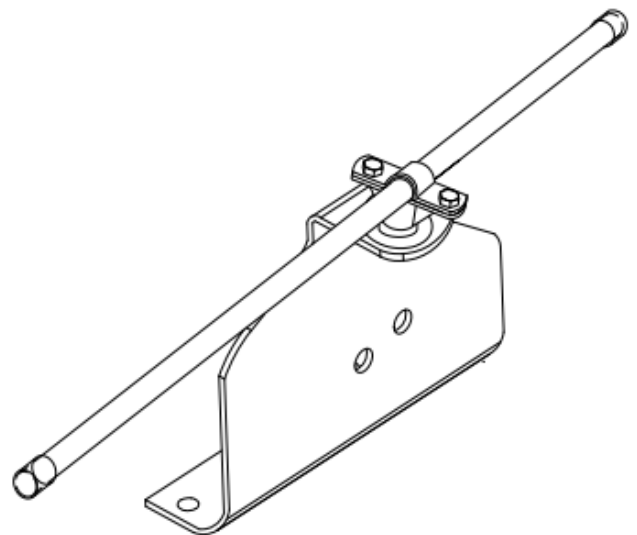


Figure 3.