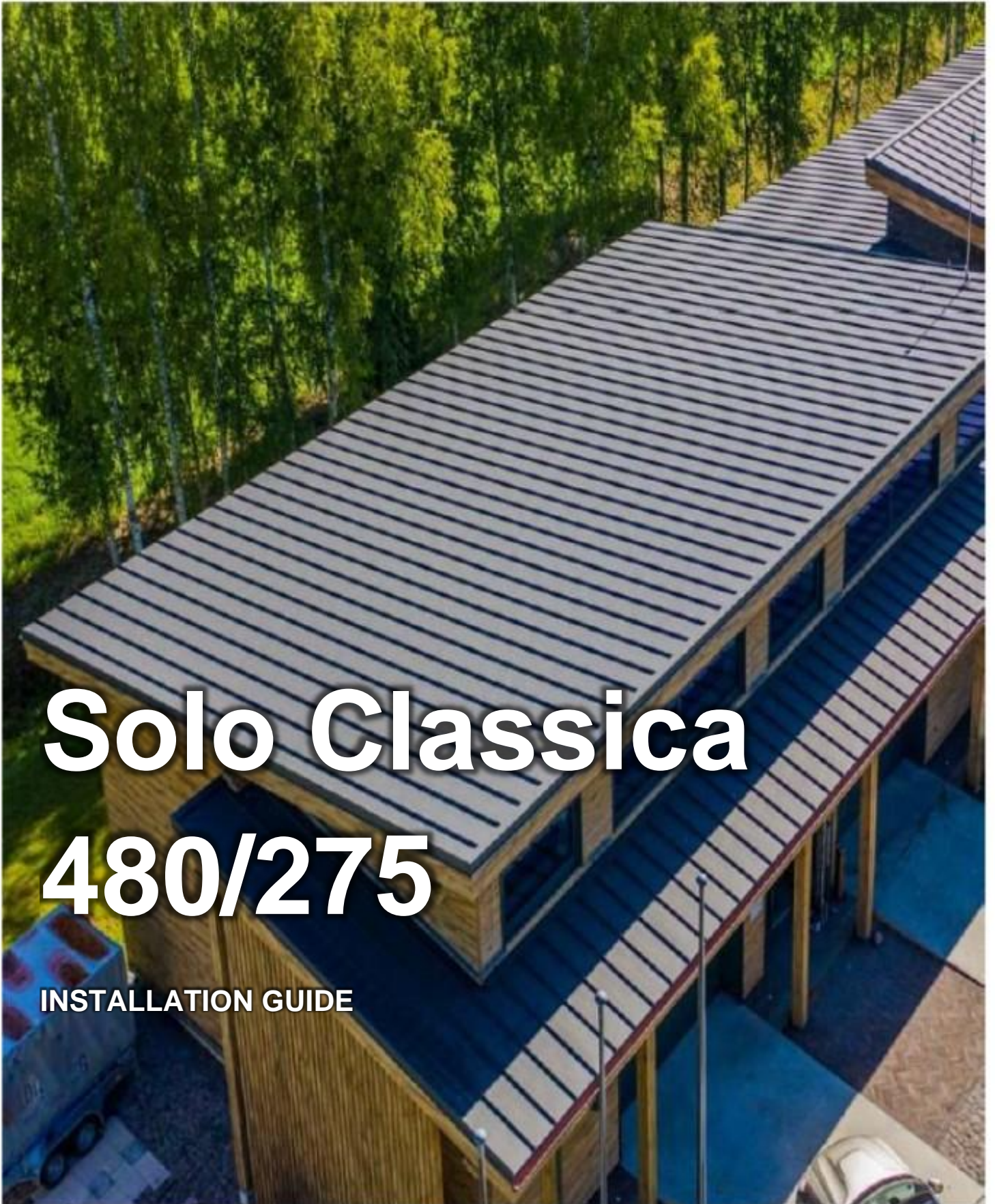




METALMASTER®

Solo Classica 480/275

INSTALLATION GUIDE



Solo Classica 480 and 275 profile

Technical specifications:

Covered width: 480/275 mm

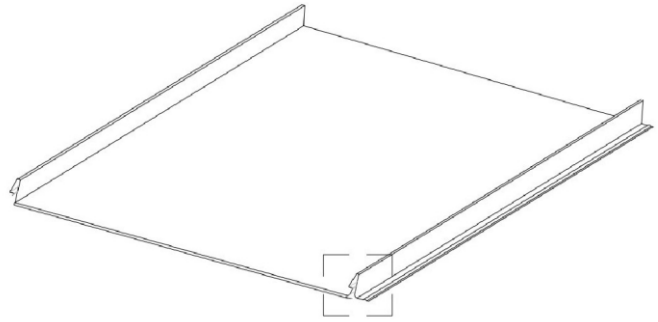
Profile height: 30 mm

Material thickness: 0.47–0.6 mm

Minimum roof pitch: 8°

Minimum sheet length: 0.75 m

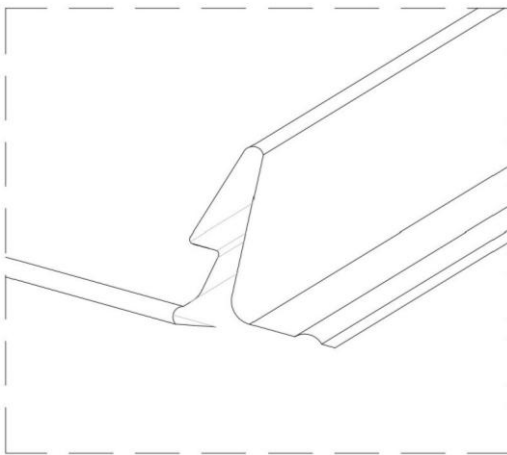
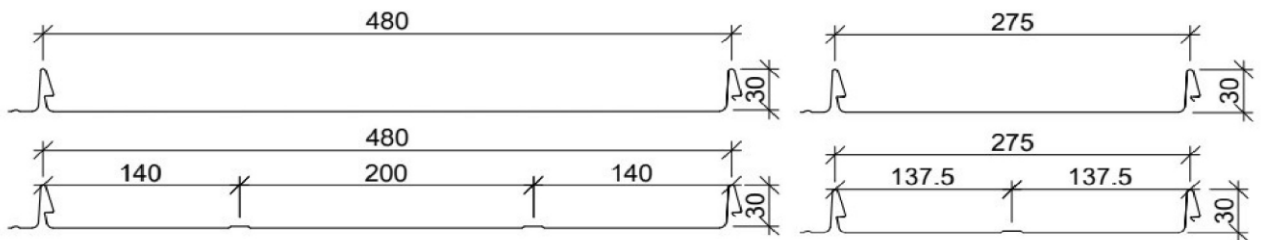
Maximum length: 12 m



For Solo Classica 480 and 275 profiles, it is important to observe the following to avoid bulging on the roof:

- Correct, high-quality installation and levelling of the battens;
- Matte coating is recommended;
- The sheet screws must not be tightened too much, so that the metal can expand and contract with temperature;
- Thicker metal will be smoother, as opposed to thinner metal.

Solo Classica 480 and 275



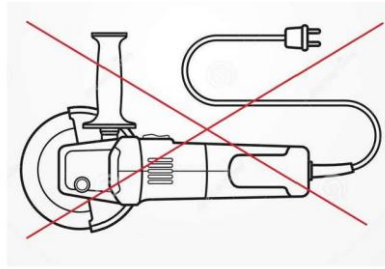
Solo Classic 480 and 275 profiles have a folded front edge, which protects them against corrosion and is more visually aesthetic.

Roof sheet treatment

- The roof sheets delivered are of the required length.
- The roof sheets may be cut using metal shears or a nibbler.
- To prevent sharp metal shavings from damaging the sheet coating, they must be wiped off regularly with a soft brush.

Do not cut the roof sheets using abrasive discs!

- It is recommended to paint the sheets with a metallic paint of matching colour at the cut locations.
- It is also recommended to immediately paint over any scratches that arise during the installation.



Sheet length calculation

- Add 30 mm to the length of the sheet, because the sheets protrude slightly over the eaves of the roof.

Batten installation

- The installation of the battens starts from the eaves.
- Attach the first batten to the cornice board, and place each subsequent batten at an interval of 20 cm, centre-by-centre.
- The top batten must be placed such that there is a gap for ventilation.
- If a snow barrier is to be installed, then additional battens are placed in the respective area.

Roof sheet installation

- The installation of the roof sheets begins on one side, preferably starting with a full-width sheet.
- Cut the last sheet to the desired width and fold it 3 cm upwards.
- The sheets are fastened to the battens using screws or special grooved nails.
- It is recommended to place the screws in a straight line, which helps to avoid possible problems in connecting the sheets.
- The verge board is installed at the edge of the roof plane, higher than the batten by the height of the fold (approx. 3 cm).

Roof installation instructions

- Install the eaves first, attaching them to the bottom plank with a few screws. The eaves are finally attached as the roof sheets are installed.
- The first sheet is installed such that it goes over the eaves and is hooked up using a special fold at the end of the sheet (Figure 1).
- The bottom corner of the sheet is attached to the eaves with screws.
- It is very important to install the first sheet correctly. The sheet must be perpendicular to the eaves. In order to more easily achieve this, it is recommended to use a straight plank.
- Once you make sure that the sheet is installed correctly, fasten it to the battens.
- It is important to make sure that the sheets are installed correctly, because the sheets are attached to the battens, and any mistakes are difficult to correct later.

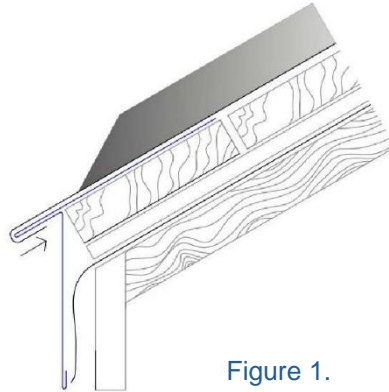


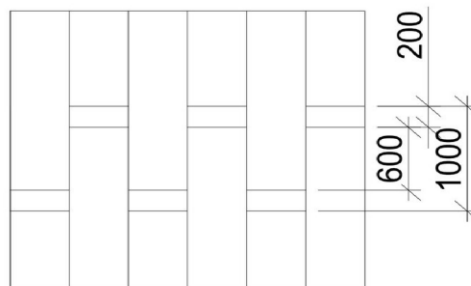
Figure 1.

Roof sheet installation

- Fasten the sheet to each batten at the perforations provided.
- As you fasten the sheet, press in the middle of it, so that it sticks better to the battens.
- Place the next sheet parallel to the previous sheet, onto the fold of the previous sheet, and push it along the sheet from the direction of the eaves until they connect.
- Repeat until the entire roofing is installed.

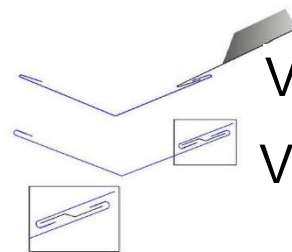
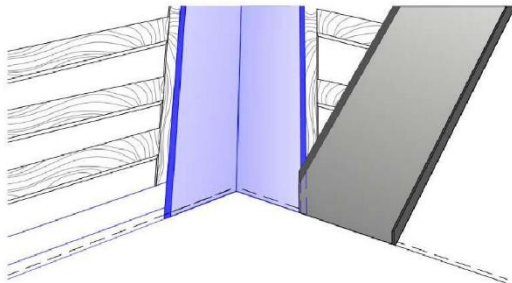
Extending sheets

- The maximum length of the SOLO Classica 480 and 275 profiles is 12 m.
- If the roof structure requires longer sheets, the sheets are joined together.
- The minimum sheet overlap is 20 cm.
- The sheet overlap of the sheets must be done in a chequered pattern, with a minimum distance of 80 cm between overlaps.
- At the overlap location, cut half of the bent-up fold of the lower sheet, as well as half of the perforated section.
- It is recommended that additional battens are applied at the fastening locations.



Drain installation

- Install the sheets up to the edge of the drain.
- Then, take the drain piece and place it into the drain hole.
- Fasten it partially.
- Additional use of sealants is recommended.
- Trim the edges of the drain, place the sheet on top of the drain, and fasten it fully.
- Then, attach the remaining sheets starting from the ridge, as well as the sheets on the other side of the drain, starting from the ridge.
- It is preferable to use templates to cut the sheets more accurately.

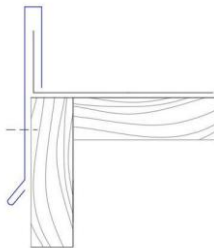


Variant 1

Variant 1

Wind deflector installation

- The wind deflector is attached to the sheet and end plate using special screws.
- If the pitched roof is straight, then the last roof sheet is cut off and its edge is folded 3 cm up.
- Attach the wind deflector above this protrusion.



Ridge assembly

- The ridge piece is attached to the sub-ridge part using special screws.
- The sub-ridge part is fastened to the roof using screws.

