



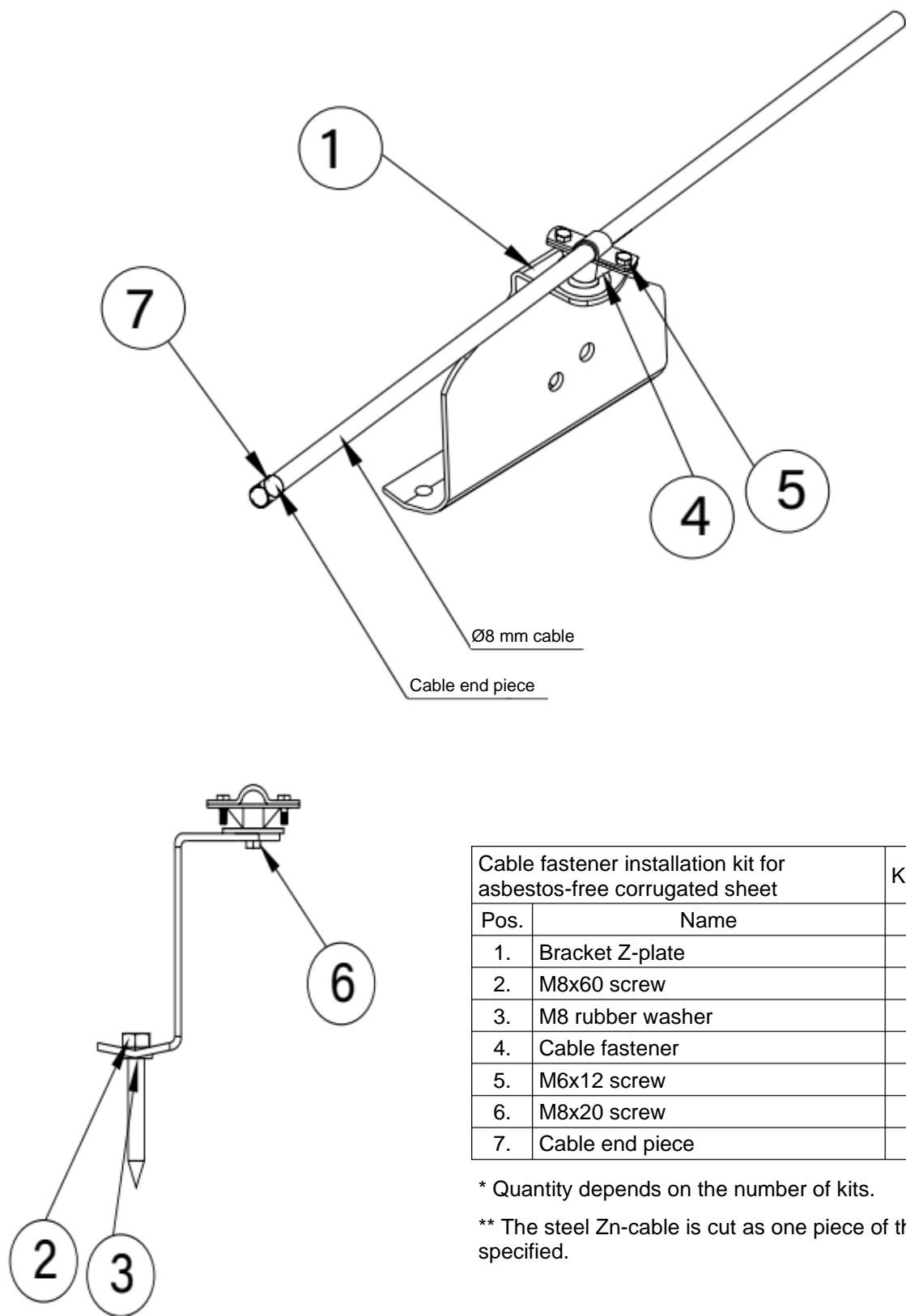
# METALMASTER®

Safety cable bracket

FOR ASBESTOS-FREE CORRUGATED  
SHEET

INSTALLATION GUIDE

# Safety cable bracket — for asbestos-free corrugated sheet



Cable fastener installation kit for asbestos-free corrugated sheet		Kit
Pos.	Name	Quantity
1.	Bracket Z-plate	1*
2.	M8x60 screw	2*
3.	M8 rubber washer	2*
4.	Cable fastener	1*
5.	M6x12 screw	2*
6.	M8x20 screw	1*
7.	Cable end piece	1*

\* Quantity depends on the number of kits.

\*\* The steel Zn-cable is cut as one piece of the length specified.

## **Safety**

---

- No more than one person, weighing up to 120 kg, may be near the safety cable at any single time!
  - Use certified safety ties!
  - Do not use the safety cable if it has visible damage or defects!
- 

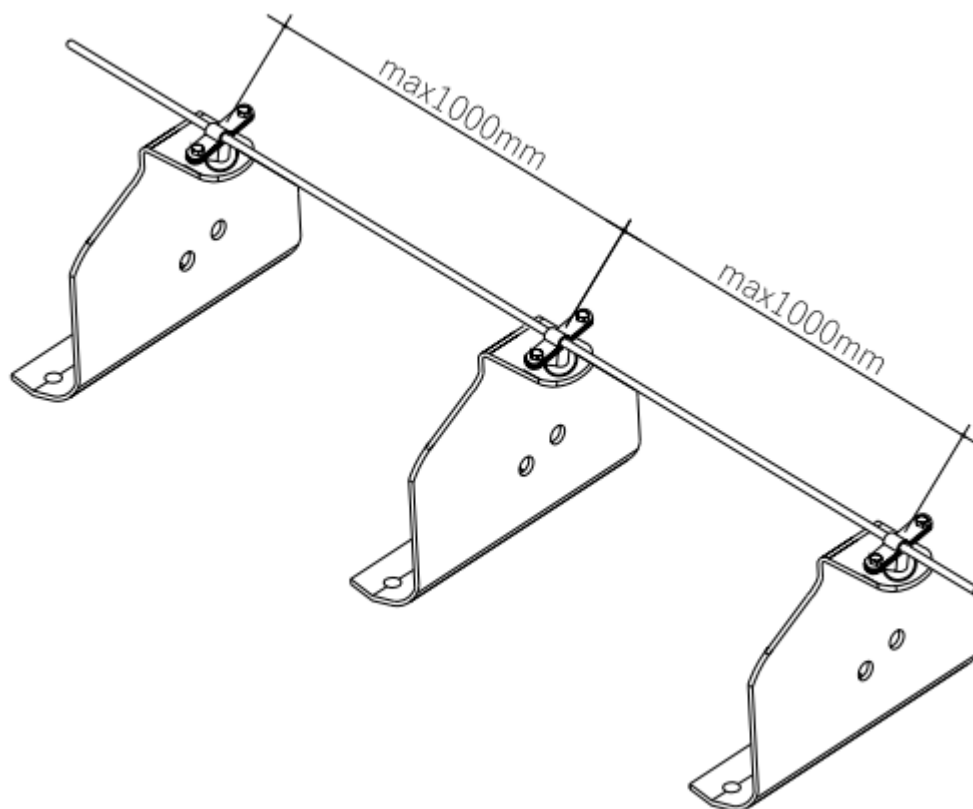


Figure 1.



## **Installing the safety cable bracket**

---

- Plan the location for installation.
- Make sure that the roof structure is stable.
- The safety cable Z-bracket plate must be installed on top of the roof battens.
- Check to confirm that the roofing is installed according to the roof installation instructions.
- Install the Z-bracket plate by placing it into the roof recess such that the PR-bracket plate is in a vertical position (Figure 2).
- Screw the PR-bracket plate to the roof using 2 M8x60 mm screws and 2 M8 rubber washers (Figure 2).
- Tighten the screws such that the Z-bracket plate holds firmly on the roof material (Figure 2).
- Install the safety cable fasteners on top of the Z-bracket plate and screw them together using the M8x20 screw (Figure 2).
- Place the cable into the cable fastener, securing it with two M6x12 screws and an M6 nut (Figure 3).
- Attach a safety cable end piece at both ends of the cable (Figure 3).
- The maximum interval between Z-bracket plates is 1000 mm (Figure 1).

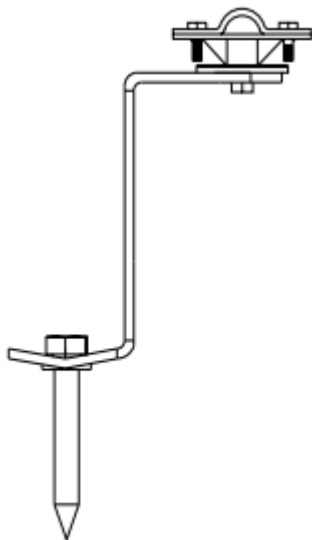


Figure 2.

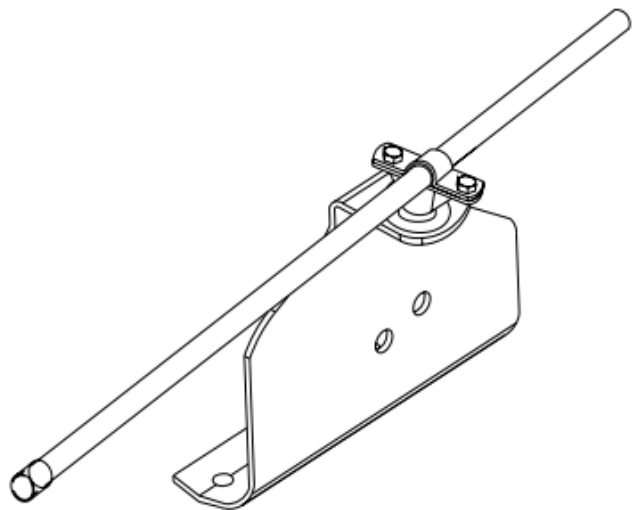


Figure 3.